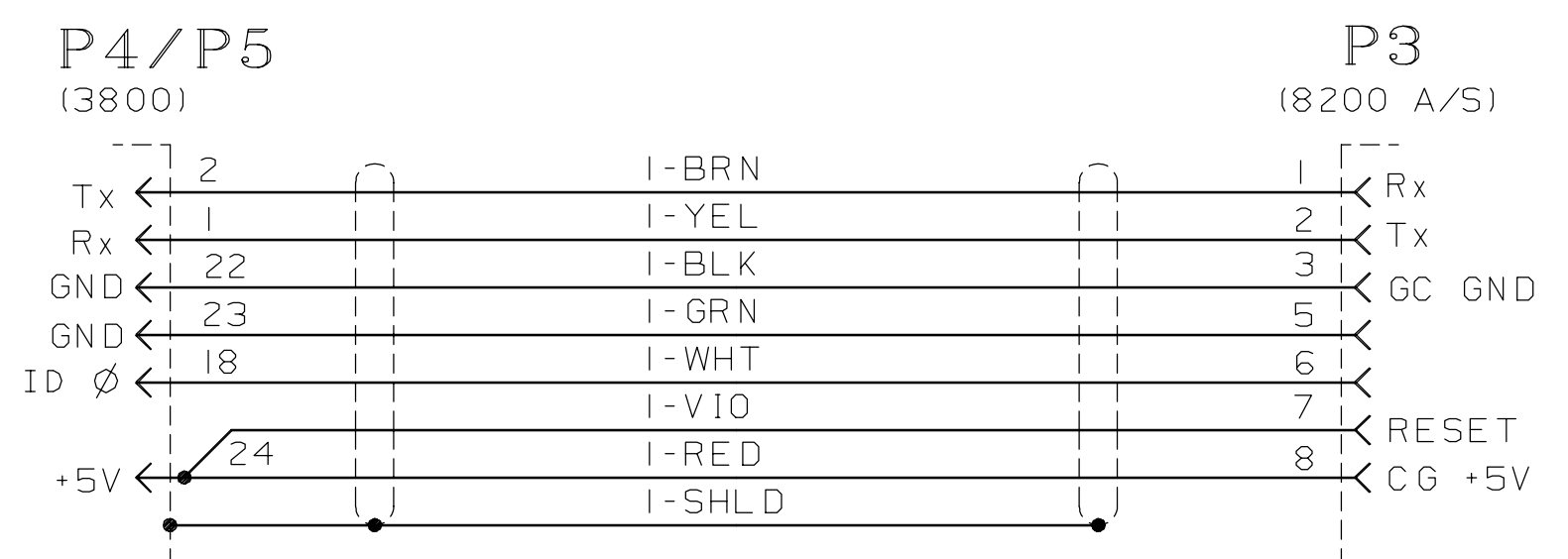
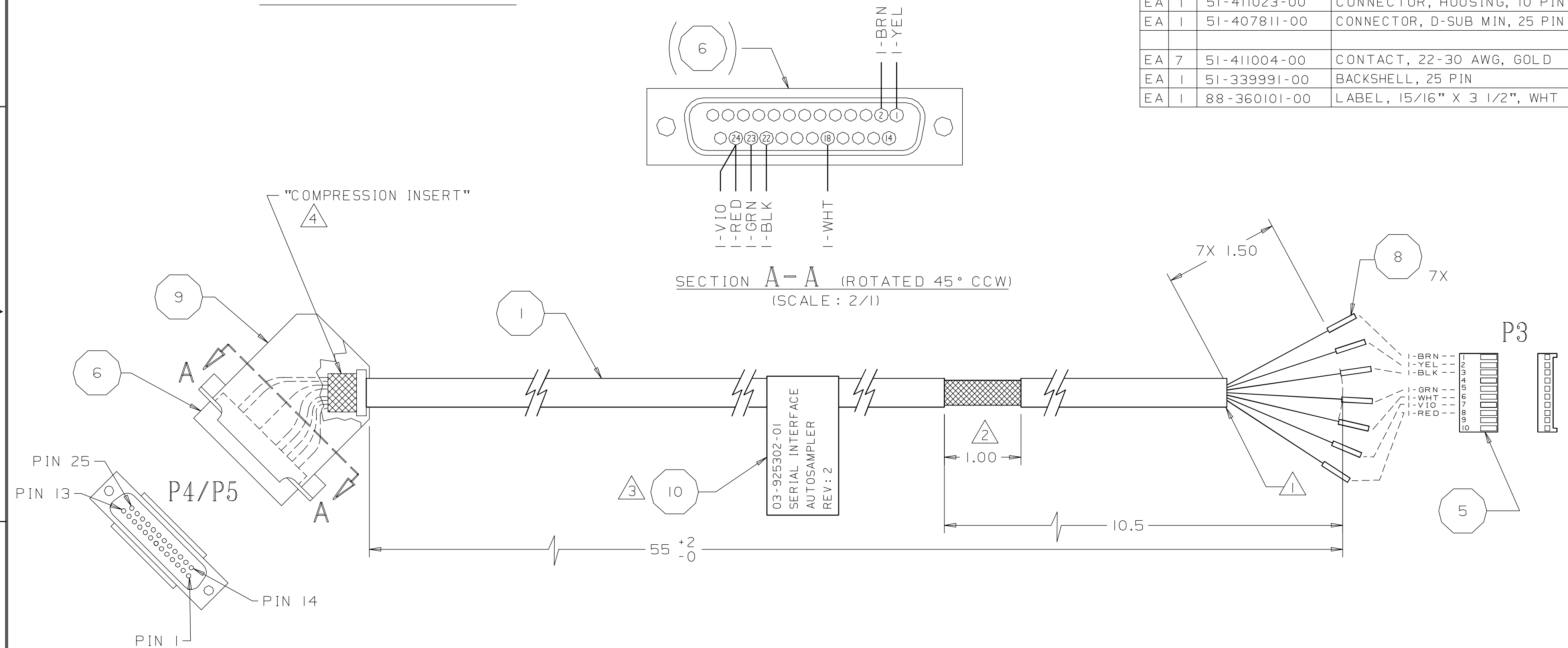
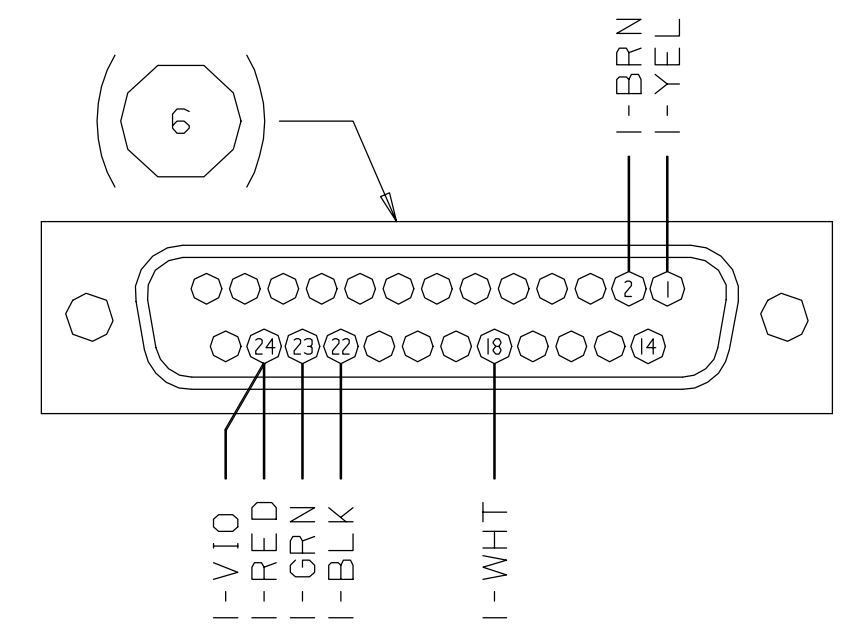


DASH NO	TYPE OR MODEL	NEXT ASSEMBLY
—	3800	03-925XXX-01

STR LG	TERM NO.	FROM	TO	TERM NO.	STR LG	UNIT	REQ	PART NUMBER	DESCRIPTION OR MATERIAL	ITEM
		P4/P5-2	P3-1	8		IN	56	81-792294-00	CABLE, 22 AWG, 9 COND, SHLD	1
		P4/P5-1	P3-2	8					WIRE, BRN	
		P4/P5-22	P3-3	8					WIRE, YEL	
		P4/P5-23	P3-5	8					WIRE, BLK	
		P4/P5-18	P3-6	8					WIRE, GRN	
		P4/P5-24	P3-7	8					WIRE, WHT	
		P4/P5-24	P3-8	8					WIRE, VIO	
									WIRE, RED	
									WIRE, SHLD	



CABLE SCHEMATIC



- NOTES:
- 4 FOLD CABLE SHIELD BRAID BACK ON SMALL DIAMETER PORTION OF "COMPRESSION INSERT" (PART OF ITEM 9) BEFORE INSTALLING IT BETWEEN BACK SHELL HALVES ITEM 9.
 - 3 MARK BOTH SIDES OF LABEL, ITEM 10, WITH PART NUMBER, NAME, AND REVISION LEVEL AS SHOWN. LOCATE LABEL APPROX MIDWAY ON CABLE.
 - 2 CUT INSULATING JACKET AWAY, AS SHOWN. DO NOT DAMAGE BRAIDED SHIELD.
 - 1 CUT OFF SHLD WIRE EVEN WITH OUTER JACKET OF CABLE ITEM 1.

DESCRIPTION OF CHANGE	DATE	BY
CABLE LENGTH WAS 95 INCHES, ROTATED END VIEW OF P4/P5	20289	NFC
SECTION A-A VIEW BOTTOM ROW PIN NUMBERS WERE (INCORRECTLY) REVERSED.	JCK	JCK
	DD	
	24 APR 97	3 SEP 97
	2	2

DO NOT SCALE DRAWING

-01	ASSY
-00	DRAWING ONLY
DASH NO.	DESCRIPTION
DRAWN JCK	DATE 29 OCT 96
APPROVED D ROBELLO	DATE 11-4-96
CHECKED JS	DATE 11-4-96
APPROVED R KLEE	DATE 11-5-96
CLASS	
ASSY, CABLE, SERIAL INTERFACE, AUTOSAMPLER	
NOT OTHERWISE SPEC: ANG± —	
FIN. ✓ DEC .X ±.5 .XX ±.25 .XXX ± —	
1/1	38
1 OF 1	C
03-925302-00	2
SCALE	DIV
SHEET	SIZE
DRAWING NO	REV